

GEM3 Quick Start Guide

For a better printing experience, please read the following information carefully.

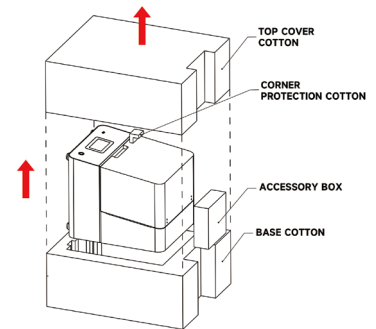
This quick start guide includes potential issues and solutions that may arise during the installation and operation of the NOVA3D GEM3. If you encounter any questions or problems not covered in this guide during use or installation, please contact us for further guide and professional services.

The NOVA3D official website: <http://www.nova3dp.com>, There you can find information about the on-sale products including printers, resin, and tech support services. Follow our official YouTube and Facebook at the end for more benefits.

Unboxing

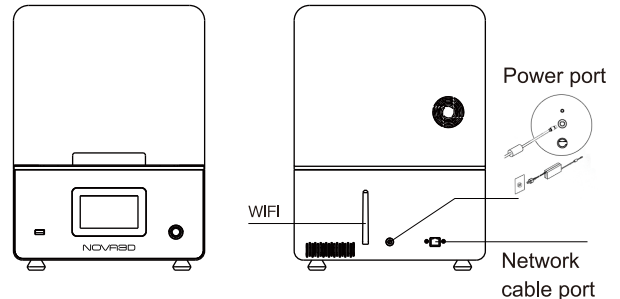
Open the outer packaging box and remove the cushioning pads and accessory box, then take the printer out of the outer packaging box.

(Note: The original packaging can be reused for shipping the machine for repairs. Please keep the complete packaging, including all foam, for future use.)



Connecting Power

- Place the printer on a flat and stable surface, then adjust the four feet on the bottom of the machine to ensure it is level.
- Remove the protective film from the resin tank and the print screen, and wipe both clean.
- Plug in the power adapter (as shown below).
- Press the power switch on the front of the printer to turn it on.



Accessory Components (Check whether the accessories are complete. If any are missing, please contact the seller.)



Filter *2



Screw Kits *4



Rubber Gloves *2



Spatula *1



U-shaped Shear *1



USB Flash Drive *1

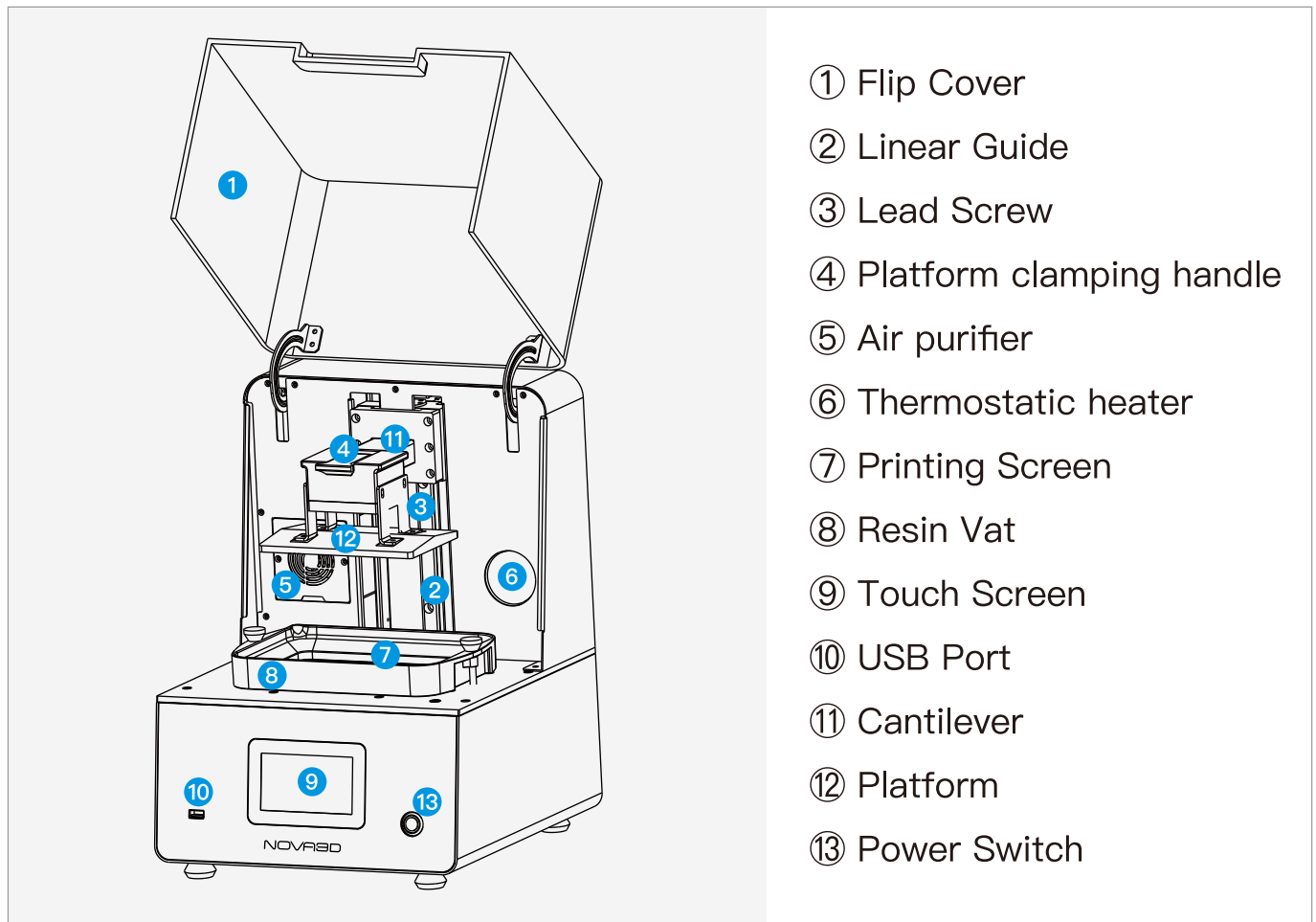


Power Adapter *1



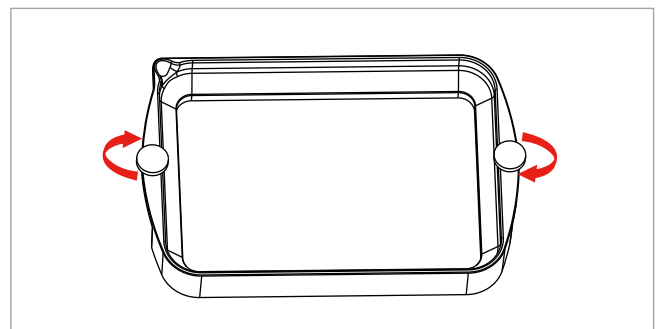
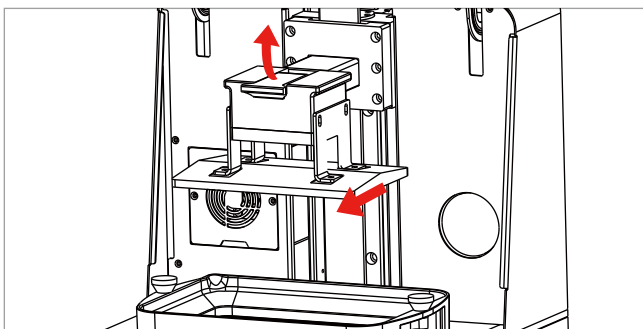
Power Cable *1

Printer Components



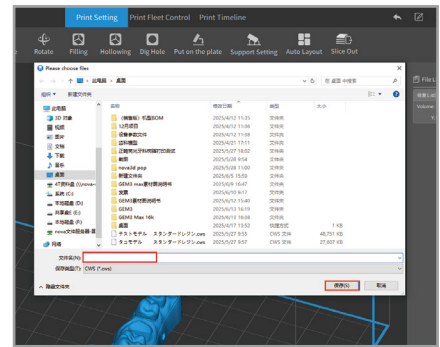
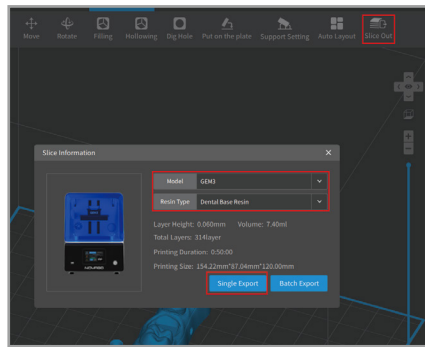
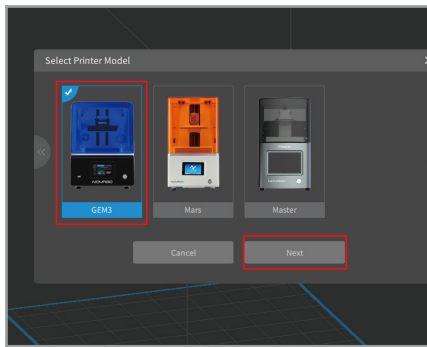
Installing Accessories

- Open the clamping handle on the top of the printing platform upwards, hold the top of the printing platform with your hand and pull the platform outwards (as shown below).
- Take out the resin vat and fixing screws from the machine packaging for assembly(as shown below).
- Turn the two fixing screws of the resin vat clockwise to insert them into the resin vat (as shown below).



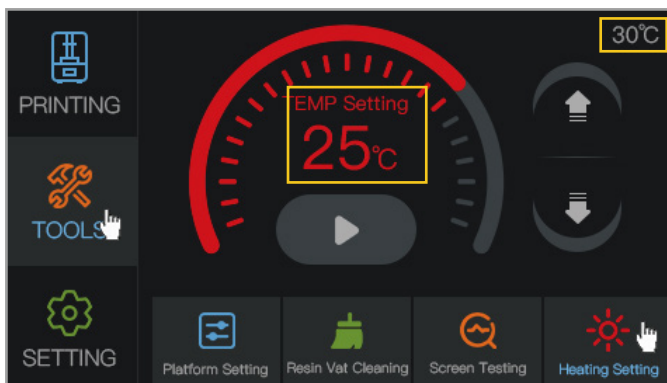
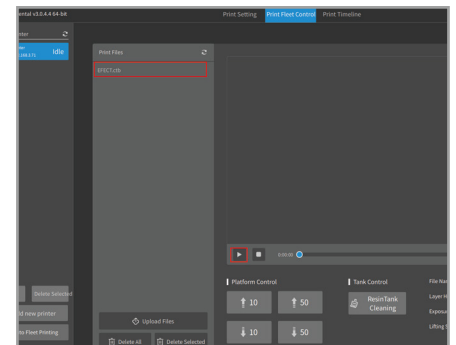
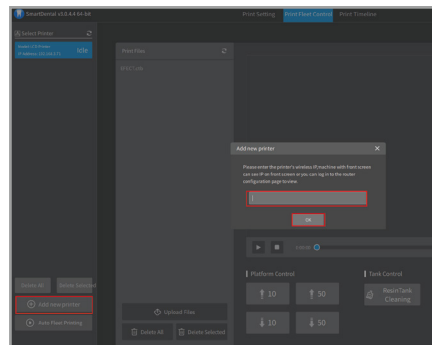
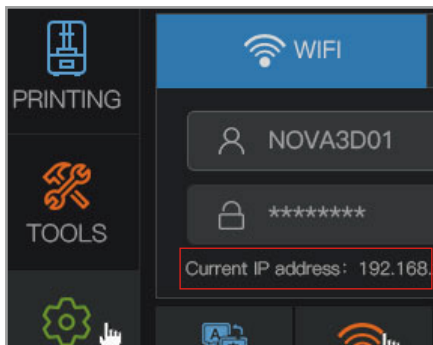
Slicing Software

- Install the NovaMaker slicing software from the included USB drive.
- Run the NovaMaker slicing software, select the model type as Whale4, import the model file, set the supports and printing parameters, and then choose to output the sliced file as a .cws file.
- Transfer the file to the printer for printing using the USB drive or via Wi-Fi/Ethernet.
- This printer is compatible with third-party slicing software such as Chitubox (.ctb).
- **Note: The .cws slice file built into the printer is only suitable for printing with standard resin.**



Wifi Connection and File Transfer

- Wifi Connection:** Click "SETTING," then click "Network Settings" and select "WIFI" or "ETHERNET", pick the same local network name as the computer running the slicing software, enter the associated password, and then click "connection". When the touch screen displays the IP address, it indicates a successful connection.
- File Transfer:** Open the NovaMaker, click "Print Fleet Control," then "Add new printer," and input the IP address of the printer you just connected. Then click "Upload Files" to upload the file to be printed to the printer via the local area network, and you can remotely control the printer for simple operations.



Thermostat Heating System

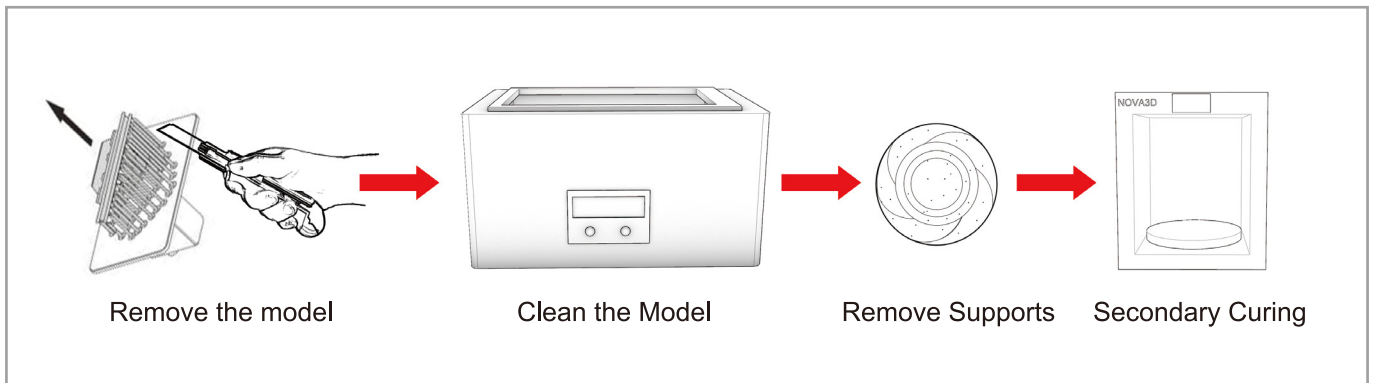
Heating Instruction: The printer's heating function is typically used in low-temperature environments. This function is not required at normal ambient temperatures. The heating temperature can be set between 20 and 40 °C, with 30 °C being the ideal option. Users can set the appropriate heating temperature based on the current ambient temperature.

Heating Settings: Click "TOOLS" on the printer, select "Heating Setting", and use the up and down keys to adjust the desired temperature value, then click the ► button to start heating. The temperature sensing system will detect the set temperature, and then start printing.

Model Post-processing

- Remove the Model:** Please wear gloves, carefully remove the printing platform, and place it on a flat surface. Use a utility knife to carefully cut around the model and remove the model.
- Clean the Model:** Use alcohol with a concentration greater than 95% (use water to clean if it is a water-washable resin). After cleaning, use a hair dryer to blow dry, air dry, or drain any alcohol from the model's surface. When the model's surface is dry and non-reflective, it has been fully cleaned.

- **Secondary Curing:** Place the cleaned and dried model in the curing box for secondary curing. (Note: Do not expose the model to ultraviolet light before cleaning is completed to avoid unnecessary curing due to incomplete surface cleaning, which will affect the surface effect of the model.)

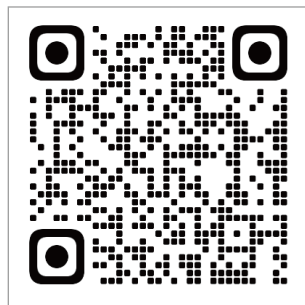


Precautions

- **Accessory Inspection:** After receiving the machine, please carefully review the accessories list. If something is missing, please contact customer service in time and we will make it up to you.
- **Usage Environment:** Place the printer horizontally on a table and use it in a well-ventilated area away from direct sunlight.
- **Safe Placement:** Keep the printer away from heat, fire, combustible materials, radioactive equipment, dampness, high temperatures, and other liquids, and make sure children do not touch it.
- **Recommended Material:** NOVA3D series resins. This printer is compatible with most liquid photosensitive resins available on the market (specific printing parameters need to be tested by the user). This material has a pungent odor and may cause allergic reactions. It is recommended to operate in a well-ventilated area and wear gloves.
- **Temperature Requirements:** The ideal range is 20-40 °C. Exceeding this range may affect the printing effect.
- **Safety Precautions:** The printer contains mechanical parts. Be careful not to pinch your hands when using it.
- **Long-term Storage:** If you do not use it for a long time, please wipe the machine clean and pay attention to waterproof and moisture-proof.
- **After-sales Support:** Do not disassemble the printer by yourself. If you have any problems, please contact NOVA3D after-sales email: sales2@nova3dp.com, we will provide quality service.



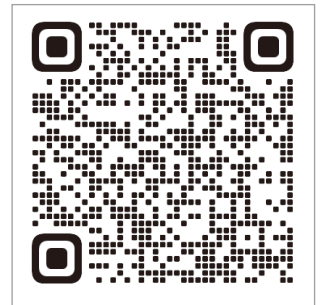
Facebook



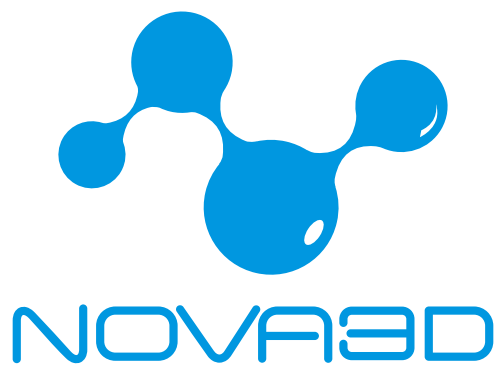
YouTube



TikTok



Instagram



✉ sales2@nova3dp.com

🌐 <http://www.nova3dp.com>

📍 4th Floor, Building 2, Jinshunyuan Factory Area (Phase II), Furong Road, Tantou Community,
Songgang Street, Baoan District, Shenzhen, Guangdong, China

Due to the continuous update of technology and products, changes in appearance and technology will not be notified separately. Without the written permission of Shenzhen Nova3D Robotics Technology Co., Ltd., this Quick Start Guide may not be reprinted or modified without authorization.